

Holmen Soccer Fields

Remington Hills Field: U11 & U12 Field

- From Hwy 53, take McHugh Rd. Exit towards High School. Turn right on Briggs Rd. take a left on Eastwood Street and a quick Right on Remington Drive. Follow to field.

Countryside Field: U13 & U14 Field

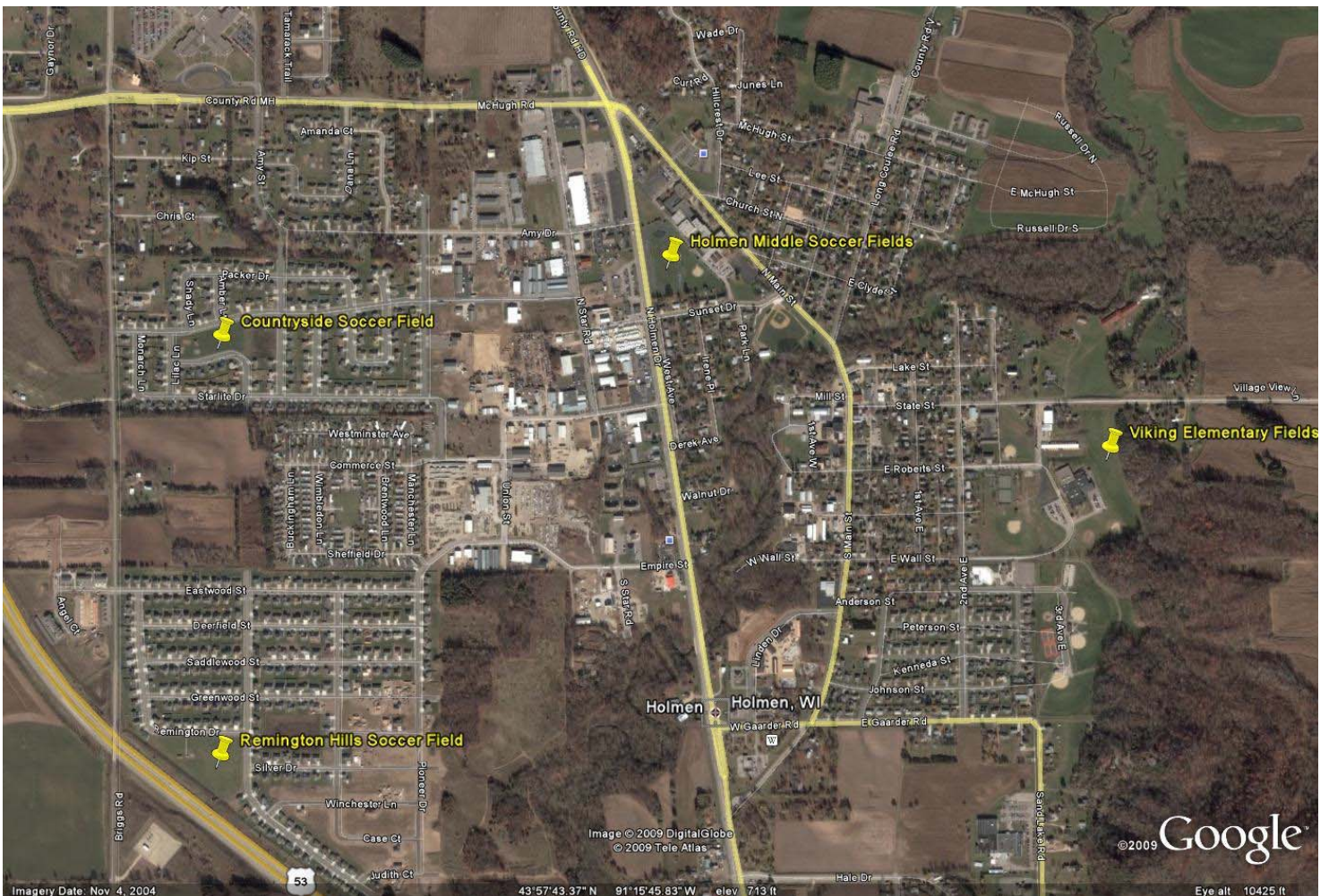
- From Hwy 53 take McHugh Rd. Exit towards High School. Turn right on Briggs Rd. Turn left on Western Ave. Follow to field.

Holmen Middle Fields: U9 & U10 AND PRSL Grade 1-4 Fields

- Located off of Holmen Drive at Holmen Middle School. Turn on to Sunset Drive and enter Parking lot. (HMS #1 = South HMS #2 = North)

Viking Soccer Fields: U8 and Under: Viking Elementary School

- Located behind Viking Elementary School. Take Holmen Drive and turn right on Gaarder Rd. Turn left on 2nd Ave. Turn Right on E Wall St follow to back of school.



Holmen Park & Rec Youth Soccer:

Park & Rec Office:

Cancellation Hotline:

(Game Changes, Weather)

John Hayes, Soccer Supervisor

Contact Info

(608) 526-2152

(608) 526-6312

(608) 526-6319

(715) 808-1508